

CBF Impact

Significant Relationships

ELEVATE

ZOOMING WITH KIDS
UNDER CURRENT
RESTRICTIONS

HOPE SPACE

SPENDING MORE TIME
AND DEEPENING
RELATIONSHIPS

DIGITAL UPDATE

GETTING CONNECTED THROUGH
EMAIL

Contents

YOUR GUIDE TO WINTER 2021

Pg. 2

CEO Perspective

Pg. 3

CBF Impact/Elevate
Fridays

Starting a new year

Pg. 5

Hope

Deepening relationships

Pg. 7

#JustListen

Val Garner's insights

Pg. 8

Kingdom Builders at Work

Serving the Lord by serving the Body

Pg. 9

Giving Tuesday

Ways to give special Support

Pg. 10

Digital Update

Email request for ministry and mailing



CEO PERSPECTIVE

As part of discipleship, one of our core values is developing significant relationships. Life experience has taught me that there are many storms on this journey. Without deep, abiding relationships I would have fallen by the wayside. This falling looks like bouts with depression, quitting on my calling, blame, isolation, and people pleasing. I am aware that the most significant relationship in my life should be with Christ. He says unless I forsake all others, I am not worthy of His kingdom. I don't think this means not to have significant relationships with others, but relationship with Him is the driving motivation of my heart. I recognize my heart isn't always at this place of focus on Jesus.

Reflecting on how my heart is moved into this place, one of the great motivators is seeing others who have deep relationship with Jesus and hearing their stories. These stories always contain ingredients of brokenness, vulnerability, and restoration. God uses significant relationships He has with others to invite me into a significant relationship with Him.

When things aren't going well, my fleshly instinct is to blame. Blame always separates, but God is calling me to trust Him with my mistakes, take ownership for my wrong, and let Him use this for His purposes, which are always good. In this process of developing deep relationship, God brings me to crisis over and over, for the purpose of growing deep roots of truly knowing Him.

I have been learning that my greatest tool for developing significant relationships with others is to share my brokenness which leads to shared experiences of struggle. This is also the path of true witnessing, where I bear witness to God's power over sin in my life.

Throughout the pages that follow in this newsletter, my hope is that you will connect with how your partnership is building significant relationship in the mission of CBF and that you feel invited to grow with us in relationship for the Glory of Christ.

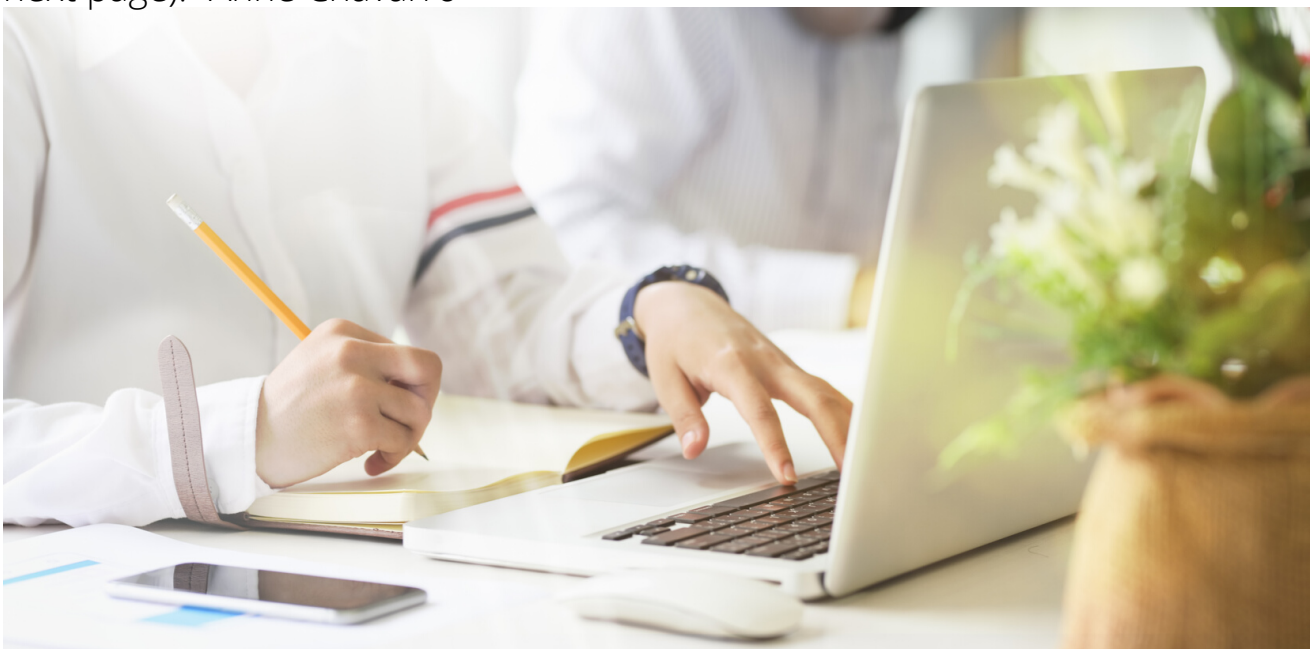
CBF Impact

We started back with the Elevate program in September by interacting with the students via Zoom. The time we have invested in this program is showing fruit. Even though the kids are "Zoomed Out" from online learning, they look forward to connecting with us again. Old and new participants alike responded eagerly when we invited them up to the CBF campus for a day retreat. This is very encouraging, considering how hard we have to work to keep their attention in the online platform!

There are many challenges for students as they navigate school online. Many students feel they are not learning and find it very easy to cheat and/or give substandard work. The relationships of accountability with instructors is weakened in the online environment.

. A good amount of the students have family members who have lost jobs and/or passed away from the virus. Both the students and their families feel the need for understanding and sensitivity towards their situation, especially since it is beyond their control. Overall, there is a feeling of apathy and hopelessness which is only growing as the separation/isolation and fear continues.

It's amazing how willing they are to share their feelings, and they are genuinely seeking solution. This has given us a unique opportunity to let them know that they are heard and that we care. We are nurturing this trust as we look to deepen the connection with Elevate Fridays (explained on the next page). -Anne Chavarro



ELEVATE FRIDAYS



Elevate Fridays are a time for the students to get out of the city and come up to the CBF Campus. They have a chance to enjoy the outdoors, while learning about the hope and joy we have in Jesus. Our goal is to provide them with a safe place where they can be themselves and have the freedom to ask the hard questions about God.

This is the first "S" in our SHIPS vision for ministry: **S**afety; **H**ealed View of God; **I**ntity in Christ; **P**urpose; **S**ignificant Relationships.

We all start off with our own ideas about God. A lot of times we can't even tell you where those descriptions come from. It's the same for the students we work with. Elevate Fridays enable us to share the truth about God and our own journeys, 'in person', with the students. It's not as simple as it sounds. Many students are struggling with tough circumstances and are hesitant to trust. Some deal with pretty harsh issues that are real obstacles to their faith. Having a safe environment begins the **first step** in building significant relationships that can greatly impact their faith journey.

-Anne Chavarro

Anchors of Hope

Significant Relationships.....without healthy and consistent relationships in our daily lives we become more and more isolated. The impact of significant relationships is sometimes taken for granted. At times we only realize the depth of their importance when they are lost.

Many in our Hope community have been starving for real, caring, and consistent, relationships in their daily lives prior to the pandemic. COVID 19 has made it even more difficult for them to have these essential interactions where their hearts can be expressed. They are looking beyond just having their personal care needs fulfilled to building lasting significant relationships with others.



Hope Celebrations started in July as a way for us to safely gather with the Hope community and their families for a time of worship, testimony, teaching, praise, and fellowship. It has become a place of belonging for individuals and families who are often over looked. Each month we have shared our lives together – many expressing fear and anxiety over what has been happening in the world. It seems every family has been touched by the pandemic in some way.

With all day programs and supportive work environments shut down for months in NYC, many in our Hope community are left at home all day with little external interaction or constructive outlet. Our older and/or immune compromised Hope participants live in isolation and fear of contracting COVID 19. Many have been quarantined since the initial outbreak. The Hope Celebrations have become a welcome opportunity for fellowship for the ones who have been able to attend.

In September we had our first ever Hope Celebration Ladies Tea! It was a beautiful Fall day, warm enough to be able to worship outside. We had a smaller than usual group due to COVID restrictions, but it worked in our favor allowing each mother/daughter pair to share their story.



"The spirit of Thankfulness and Hope" was the theme as we shared God's word and our lives with one another. Many moms expressed deep anxiety for the future of their children and communities. Most of the 'children' have aged out of city programs, and have been left scrambling to create a 'new normal' in this time of uncertainty. We spent the afternoon encouraging each other, as in the words of Habakkuk;

'Though the fig tree does not bud and there are no grapes on the vines, though the olive crop fails and the fields produce no food, though there are no sheep in the pen and no cattle in the stalls, yet I will rejoice in the LORD, I will be joyful in God my Savior' (Habakkuk 3:17-18).

The Hope Celebrations have become a time of renewal for our Hope participants and their families. They allows us to invest in each other through worship, the Word (adapted to the learning abilities of our Hope Guests), fellowship, and meal sharing.

Our desire is for Hope participants to build significant relationships with one another and most importantly with Jesus - to leave knowing they are valued important members of the body of Christ.

-Anne Chavarro

#JustListen

Volunteer's perspective

The #JustListen program has given me a wonderful opportunity to make a new friend, Sherry Tirado.

We have not met face to face, but have been communicating with each other via the phone each week.

When Sherry was a teenager and young adult, she spent several years living at Camp Hope. She speaks very highly of those days and remembers them well.

Sherry is a very outgoing person and seems to make friends easily. I find her to be loving, non-judgmental, and extremely observant. She has a good memory too!

Although Sherry has Cerebral Palsy, and is confined to a wheelchair, I have never heard her complain about her circumstances. She has a positive attitude and is thankful for each day. I have learned a lot from her wonderful example of being grateful for what she can do, and not bitter because of her disability.

I am looking forward to meeting Sherry, in person, at the Christmas celebration in Huntington, NY.

- Val Gardner

To participate in the
#JustListen program, visit
www.cbfny.org/justlisten



Val



Sherry



Kingdom Builders at Work



This past quarter has been filled with much blessing from skilled and talented individuals. A lot of time has been invested in stewarding our resources so we can have a greater impact in our ministry.

This time of slow down and cut back has allowed us to deepen our relationships by focusing on 1:1 days with Hope guests, Hope Celebration Saturdays, and Elevate Fridays,

Post COVID we are gearing up for overnight campers, family retreats, workshops, resource fairs, and an auction....etc.

There's some sweat and lots of satisfaction doing His Kingdom work, serving shoulder to shoulder with your brothers and sisters, and making a difference in peoples' lives, including your own!

Prayerfully consider honoring God with your gifts and skills in His ministry here at CBF. There is room for any and all levels of abilities, if you want to learn how to do some of these things, come and work alongside those who're heading up a project. Any level of commitment can be accommodated.

This Quarters' scheduled work list:

Construction Projects: electrical rough in and wiring; wall and ceiling insulation, and sheetrock, and mudding; kitchen cabinets design, fabrication, installation, tiling, flooring, backsplash, updating in bedrooms and hallways; trim work and painting throughout.

Firewood and Lumber Organization: move/stack multiple large piles of split firewood to target usage areas; move large sawmill logs to log deck to keep from rotting; move/cleanup multiple piles of branches and scrap wood.

Cleanout and organize Stored Items: multiple outbuildings need sorting and organizing; furniture and other items of value need to be sorted; scrap metal and scrap cars need to be disposed of.

Sign up at www.cbfny.org/get-involved



GIVING TUESDAY

December 1, 2021



Hope Day Events

\$50 per person

Sponsor an opportunity for our Hope guests to understand their value in the Kingdom while deepening their relationships with the Body of Christ.

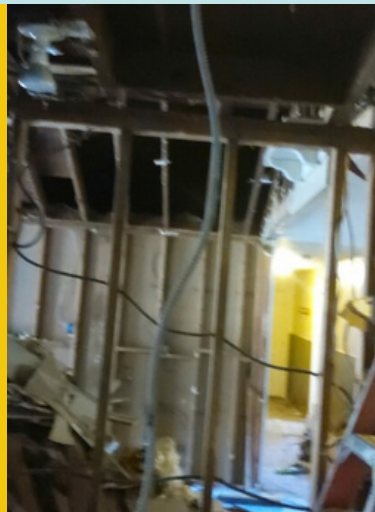
Elevate Fridays

\$600 per group

Sponsor an introduction to God and His word for a group of Elevate students, as we bring them up to campus for an afternoon of God centered activity.



Phase 1 Building 50
99% complete



Phase 2 Building 51
50% complete

Building 51

\$30,000 project cost

Support the CBF vision of retreats, work shops, work groups, missionaries, resource fair, all to equip and teach about God's word. We have talented volunteers that get the work done at cost. Be a part of the future blessings for many.

To support any of these great events or our general ministry fund



Digital Update

YES, we are asking for your email address. **NO**, we are not going to stop mailing our monthly letters and newsletters to you if you don't have one.

As much as possible, we would like to go paperless and cut down on the cost of mailing.

In addition, we would like to have a "real time" response to ministry and body needs. We have the opportunity to carry one another's burdens (Gal 6:2) by having quick response to requests within the Body of CBF and our family of supporters. Any skill or ability you would like to share would be appreciated. Indicate your interest in being part of the resource pool and we will email you a survey.

To add your email to the list, or make sure you are still on our list, or be added to the resource pool please send an email with your name and address to Frances Reid at freid@cbfny.org.

How To Help



Please keep the mission and its partners in prayer as we grow where God has planted us.



Gifts of resource and finance are always welcomed by the mission.

Visit: www.cbfny.org/donate for more information.

Make checks payable to:
Children's Bible Fellowship
250 Nimham Road
Carmel, NY 10512



Consider donating your time and skills during one of our upcoming events.

For more information see our website at:
www.cbfny.org/get-involved

